

Illicit Discharges

HOW TO RESPOND TO THEM



Detect, Contain, Remove

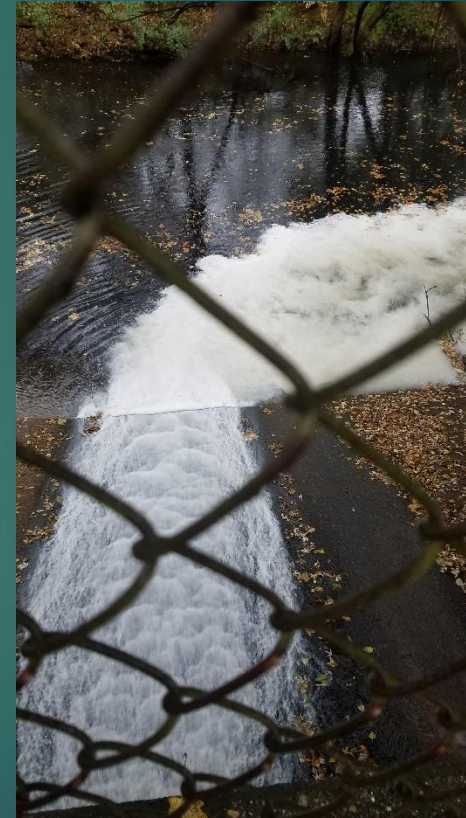
- ▶ How are they received?

- ▶ Direct Observation
- ▶ 911 Call
- ▶ Complaint Line Call – PADEP SERO, NRC, EPA



- ▶ Now what?

- ▶ Verify finding
- ▶ Notify MS-4 reporter
- ▶ Who you going to call next?



Detect, Contain, Remove

- ▶ How are they detected?
 - ▶ Change of color, cloudiness, foam
 - ▶ Odor
 - ▶ Other material in stream
 - ▶ Obvious causes like an accident, fire or similar exciting event.
- ▶ First Responders are often the missing link to discovery!



Detect, *Contain*, Remove

- ▶ Has the source been located (and stopped)?
- ▶ Is it safe?
- ▶ Who can contain the spill and/or determine if it is safe?

- ▶ Public Works / Sewer Authority
- ▶ Fire Department
- ▶ HazMat Team
- ▶ PADEP SERO ER Team
- ▶ Environmental Contractor



Detect, Contain, *Remove*

- ▶ What do you mean?
 - ▶ Once containment has been started someone will need to maintain it and finish the cleanup. Sometime the "cure" is worse than the original problem.
 - ▶ What if there are major impacts to the environment?
 - ▶ What if we have not determined where it started?
- ▶ Who cleans it up?
 - ▶ Excellent question, bottom line up front: YOU



Thank you for your time

- ▶ Larry Bak
- ▶ Deputy Director, Delaware County Emergency Management
- ▶ Chair, Delaware County LEPC
- ▶ Chief, Delaware County Hazmat Response Team

- ▶ Emergency?: Dial 911
- ▶ Office: 610-565-8700
- ▶ Mobile: 484-486-4767
- ▶ Email: bakl@co.delaware.pa.us